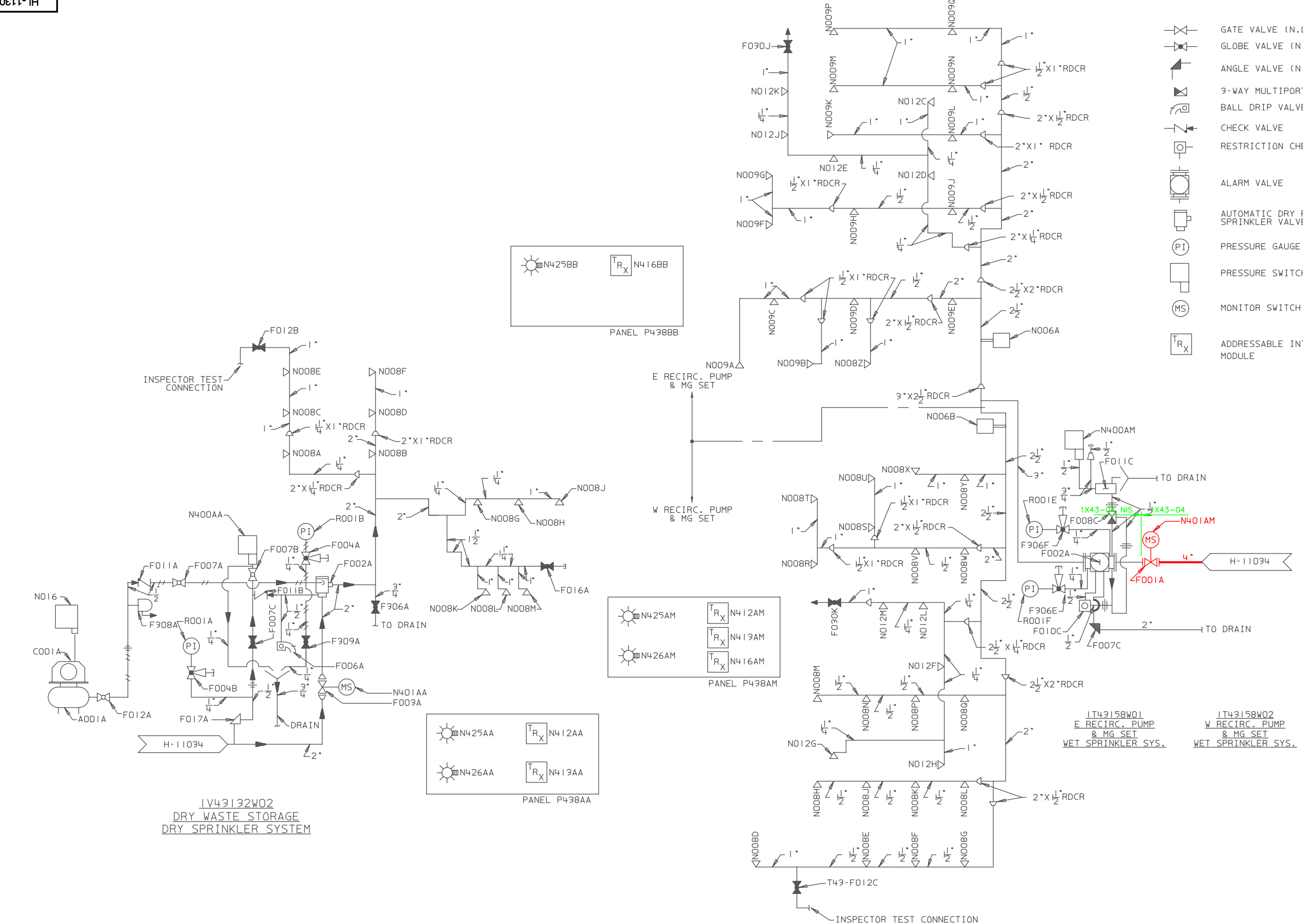


A
B
C
D
E
F
G
H
J

1 2 3 4 5 6 7 8 9 10 11 12 13



- LEGEND:**
- GATE VALVE (N.O.)
 - GLOBE VALVE (N.O.)
 - ANGLE VALVE (N.C.)
 - 3-WAY MULTIPORT VALVE
 - BALL DRIP VALVE
 - CHECK VALVE
 - RESTRICTION CHECK VALVE
 - ALARM VALVE
 - AUTOMATIC DRY PIPE SPRINKLER VALVE
 - PRESSURE GAUGE
 - PRESSURE SWITCH
 - MONITOR SWITCH
 - ADDRESSABLE INTERFACE MODULE
 - DRAIN FUNNEL
 - RETARD CHAMBER
 - FLOW INDICATOR
 - AIR LINE
 - CAP
 - REDUCERS
 - PRESSURE RELIEF VALVE
 - SIDE OUTLET GLOBE VALVE
 - COMPRESSED AIR TANK
 - AIR COMPRESSOR
 - GATE VALVE (N.C.)
 - SPRINKLER
 - ANGLE VALVE (N.O.)
 - INDICATING LIGHT
 - GLOBE VALVE (N.C.)
 - UNION

- NOTES:**
- ALL MPL NO'S ON SYSTEMS 1V43158W01 & W02 ARE PRECEDED BY T43.
 - ALL MPL NO'S ON SYSTEMS 1V43132W02 ARE PRECEDED BY V43.

- REFERENCES:**
- SX-14123 FIRE PROTECTION SPR SYS PPG PLAN DRY WASTE STG
 - S-50180 FIRE PROTECTION SPR SYS PPG PLAN E & W RECIRC. PUMP & MG SETS - SYS 1V43158W01 & W02
 - D11031 FIRE PROTECTION & DETECTION SYSTEMS
 - SX-14529 FIRE PROT-ADDL PLAN E & W RECIRC. PUMP & MG SETS SYS. 1V43158W01 & W02
 - H-11034 FIRE PROTECTION-REAC & RDW BLDGS.
 - SX-14522 INSTRUCTIONS-FIRE PROT SPR SYSTEMS
 - S-50181 FIRE PROTECTION ISO-E & W RECIRC. PUMP & MG SETS SYS. 1V43158W01 & W02
 - H-40114 FIRE PROT. PIPING-PLANS & DETAILS DRY WASTE STORAGE AREA
 - H-40272 FIRE PROT. PIPING-PLAN & DETAILS DRY WASTE STORAGE AREA
 - H-40273 FIRE PROT. PIPING HANGER DETAILS DRY WASTE STORAGE AREA

LICENSE RENEWAL DOCUMENT

T43,V43 ACAD14 HL1130407

SOUTHERN COMPANY

LICENSE RENEWAL SCREENING FOR INFORMATION ONLY

Revision: A Date: 11-19-99
 APPROVED, ISSUED PER LICENSE RENEWAL BOUNDARY PACKAGES.
 DRAWING CREATED FROM H-11304 SH.7, REV.16; BY TRM.

EDWIN I. HATCH NUCLEAR PLANT UNIT No.1
 FIRE PROTECTION P&ID
 E & W RECIRC. PUMP, MG PUMP SETS & DRY WASTE STORAGE

BY	CHK'D	APPR'D	DATE	SCALE	LOCATION	DOCUMENT NUMBER	REVISION
TRM	MDS	ASK		None	10-502	HL-11304 SH. 7 OF 10	A