

- LEGEND:**
- PILOT HEAD
 - ⌵ SPRAY NOZZLE
 - ⬡ DRY PILOT ACTUATOR
 - PRESSURE SWITCH
 - ⊖(PI) PRESSURE INDICATOR
 - ⊖(MS) MONITOR SWITCH
 - ⊖(TRX) ADDRESSABLE INTERFACE MODULE
 - ⊖(PR) PRESSURE REGULATOR
 - ⊖(IL) INDICATING LIGHT
 - ⊖(GV) GLOBE VALVE (N.O.)
 - ⊖(GVC) GLOBE VALVE (N.C.)
 - ⊖(AGV) ANGLE GLOBE VALVE (NC)
 - ⊖(9WV) 9-WAY MULTIPOINT VALVE
 - ⊖(STR) STRAINER
 - ⊖(RO) REDUCING ORIFICE
 - ⊖(CV) CHECK VALVE
 - ⊖(BDV) BALL DRIP VALVE
 - ⊖(OSYV) OS & Y VALVE (N.O.)
 - ⊖(BGM) BREAK GLASS MANUAL STATION
 - ⊖(AL) AIR LINE
 - ⊖(BV) BALL VALVE (N.O.)
 - ⊖(FV) FLOODING VALVE
 - ⊖(SOGV) SIDE OUTLET GLOBE VALVE (N.O.)
 - ⊖(PS) PIPE STRAINER
 - ⊖(PV) PLUG VALVE (N.C.)
 - ⊖(CSH) CLOSED SPRINKLER HEAD
 - ⊖(U) UNION
 - ⊖(P) PLUG

- NOTES:**
1. ALL AIR LINES ARE 1/2" UNLESS OTHERWISE NOTED.
 2. ALL MPL NO.S ON SYS 1Z43112W02 ARE PRECEDED BY 249 UNLESS OTHERWISE NOTED.
 3. ALL MPL NO.S ON SYS 1X43130W15 ARE PRECEDED BY X49 UNLESS OTHERWISE NOTED.

- REFERENCES:**
- SX-11949 N.W. CORNER TURBINE LUBE OIL STOR. TANKS
 - H-40119 FUEL OIL AT START UP BOILER
 - D-11031 FIRE PROTECTION AND DETECTION SYS.
 - SX-14522 INSTRUCTION MANUAL/WATER SUPPRESSION SYS.
 - SX-11968 INSTRUCTION MANUAL/WATER SUPPRESSION SYS.
 - H-11146 SERVICE WATER PUMP STRUCTURE TO BUILDING
 - H-11207 SERVICE & INST. AIR AT H.P. COMPRESSORS
 - B-11944 FIRE PROT FCD - 1X43130W15
 - B-11957 FIRE PROT FCD - 1Z43112W02

LICENSE RENEWAL DOCUMENT

MPL # X43, Y43 ACAD14 HL1130406



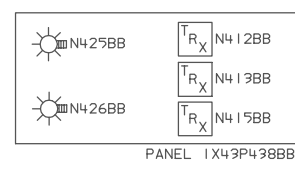
LICENSE RENEWAL SCREENING FOR INFORMATION ONLY

EDWIN I. HATCH NUCLEAR PLANT UNIT No. 1
FIRE PROTECTION P&ID-FUEL OIL @ S.U.
BOILER & LUBE OIL STORAGE TANKS

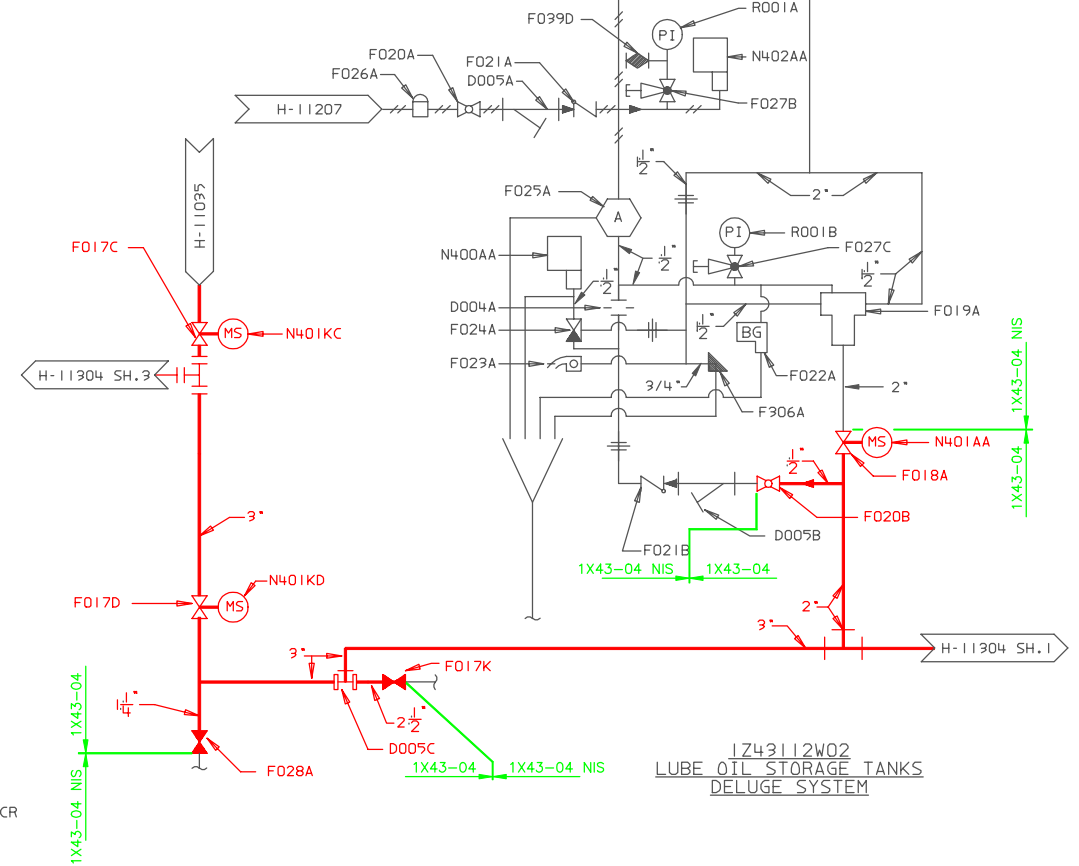
Revision: A Date: 11-19-99
APPROVED, ISSUED PER LICENSE RENEWAL BOUNDARY PACKAGES.
DRAWING CREATED FROM H-11304 SH.6, REV.13; BY TRM.

BOUNDARY DIAGRAM NO.: 1X43-B01-10
FUNCTION(S) NO.: 1X43-04
PREPARED BY: M D STEPHENS
DATE: 2/5/98
REVIEWED BY: ALEX MORRISON
DATE: 7/13/98

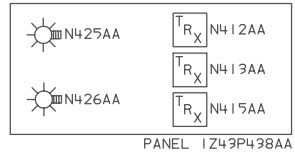
DATE	SCALE	LOCATION	DOCUMENT NUMBER	REVISION
TRM	LCF	10-502	HL-11304	A
DATE	None		SH.6 OF 10	



1X43130W15
START-UP BOILER
DELUGE SYSTEM



1Z43112W02
LUBE OIL STORAGE TANKS
DELUGE SYSTEM



PANEL 1Z43P498AA