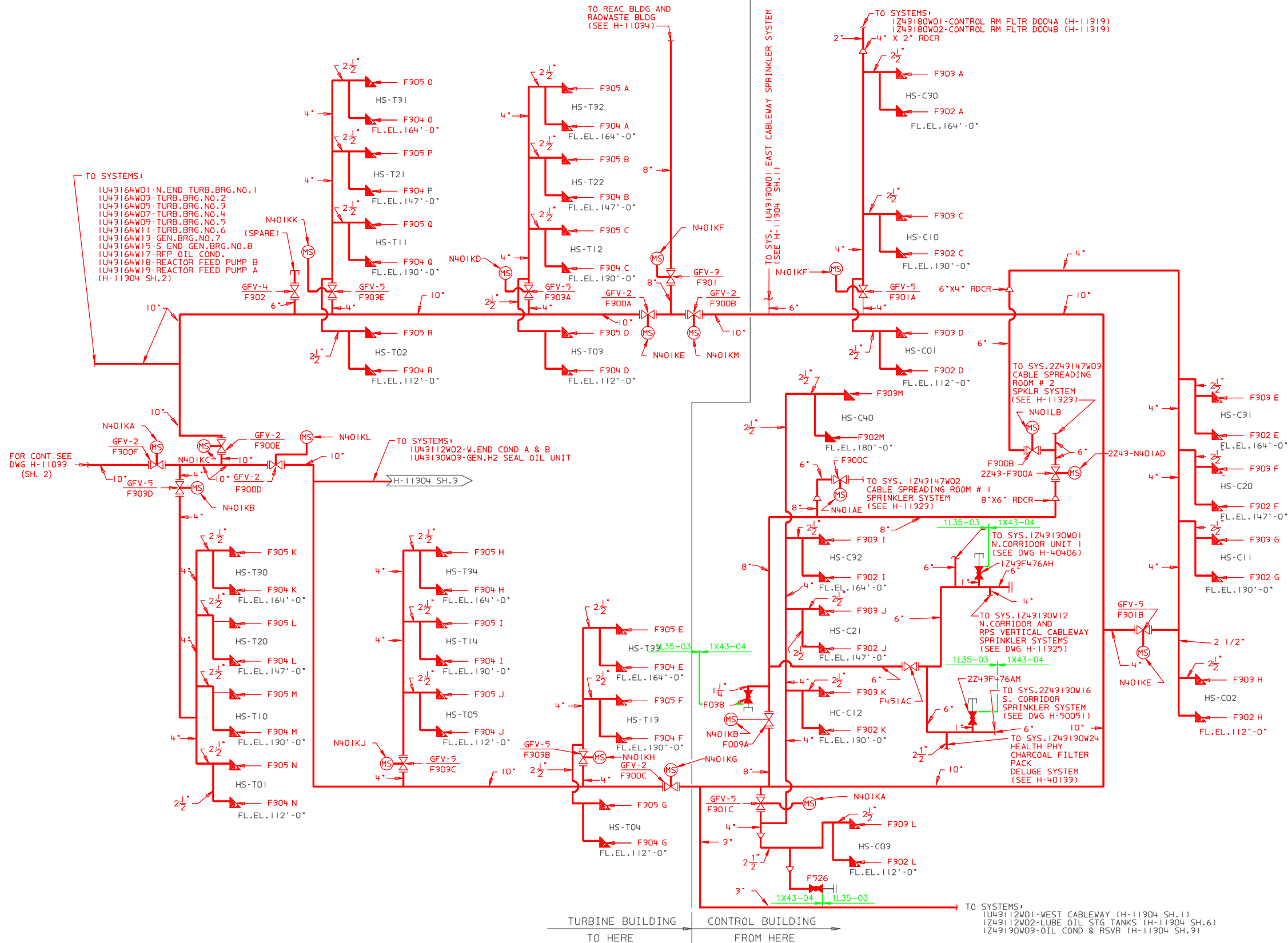


TURBINE BUILDING TO HERE CONTROL BUILDING FROM HERE

BOUNDARY DIAGRAM NO.: 1X43-B01-05
FUNCTION(S) NO.: 1X43-04
PREPARED BY: M D STEPHENS
DATE: 2/5/98
REVIEWED BY: ALEX MORRISON
DATE: 7/13/98



- LEGEND**
- GATE VALVE (N.O.)
 - GLOBE VALVE (N.C.)
 - 1 1/2" ANGLE VALVE (CLOSED) MK-GFV-26
 - 2 1/2" ANGLE VALVE (CLOSED) MK-GFV-27
 - REDUCER
 - CAP
 - MONITOR SWITCH

- NOTES**
1. ALL MPL NO.'S IN TURBINE BUILDING ARE PRECEDED BY U43
 2. ALL MPL NO.'S IN CONTROL BUILDING ARE PRECEDED BY 243 UNLESS NOTED OTHERWISE
 3. ALL PIPE AND FITTING MATERIALS TO BE PER PIPE CLASS KBF.

- REFERENCES**
- BM-11010 VALVES FOR FIRE PROTECTION INSTALLATION
 - D-11031 FIRE PROTECTION AND DETECTION SYSTEMS
 - H-11033 FIRE PROT P&ID - YARD MAINS
 - H-11034 FIRE PROT P&ID - REAC & RDWSTE - BLDGS
 - H-11157 FIRE PROTECTION-PIPING-TURBINE & CONTROL BUILDING-PLAN BELOW EL 130'-0"
 - H-11158 FIRE PROTECTION-PIPING-TURBINE & CONTROL BUILDING-SECTIONS
 - H-11159 FIRE PROTECTION-PIPING-TURBINE BUILDING-SECTIONS
 - H-11904 SH.1 FIRE PROT P&ID - E & W CABLE WAYS
 - H-11904 SH.2 FIRE PROT P&ID - RF PUMP
 - H-11904 SH.3 FIRE PROT P&ID - GEN H2 UNIT & OIL RSVR
 - H-11904 SH.4 FIRE PROT P&ID - W END OF COND BAY
 - H-11904 SH.6 FIRE PROT P&ID - AUX BOILER & OIL STOR TANKS
 - H-11919 FIRE PROTECTION-PIPING-CONTROL ROOM ROOF CHARCOAL FILTER DELUGE SYSTEM
 - H-11923 FIRE PROT P&ID-CABLE SPREADING ROOM
 - H-11925 FIRE PROT P&ID - RPS ROOMS & CORRIDORS
 - S50170 FIRE PROT SPY/SPR SYS-8" FIRE PROTECTION SUPPLY
 - S50171 FIRE PROT SPY/SPR SYS-4" STAND PIPE SYSTEM

LICENSE RENEWAL DOCUMENT

MPL NO. 1U43, 1Z43, 2Z43 ACAD14 HL11035



LICENSE RENEWAL SCREENING FOR INFORMATION ONLY

EDWIN I. HATCH NUCLEAR PLANT No.1
FIRE PROT-PIPING & INSTRUMENT
DIAG-TURBINE & CONT BUILDINGS

Revision: A Date: 12-06-99
APPROVED, ISSUED PER LICENSE RENEWAL BOUNDARY PACKAGES. DRAWING CREATED FROM H-11035 SH.1, REV.22; BY TRM.

BY	CHK'D	APPR'D	DATE	SCALE	LOCATION	DOCUMENT NUMBER	REVISION
TRM	MDS	ASK		None	10-502	HL-11035	A