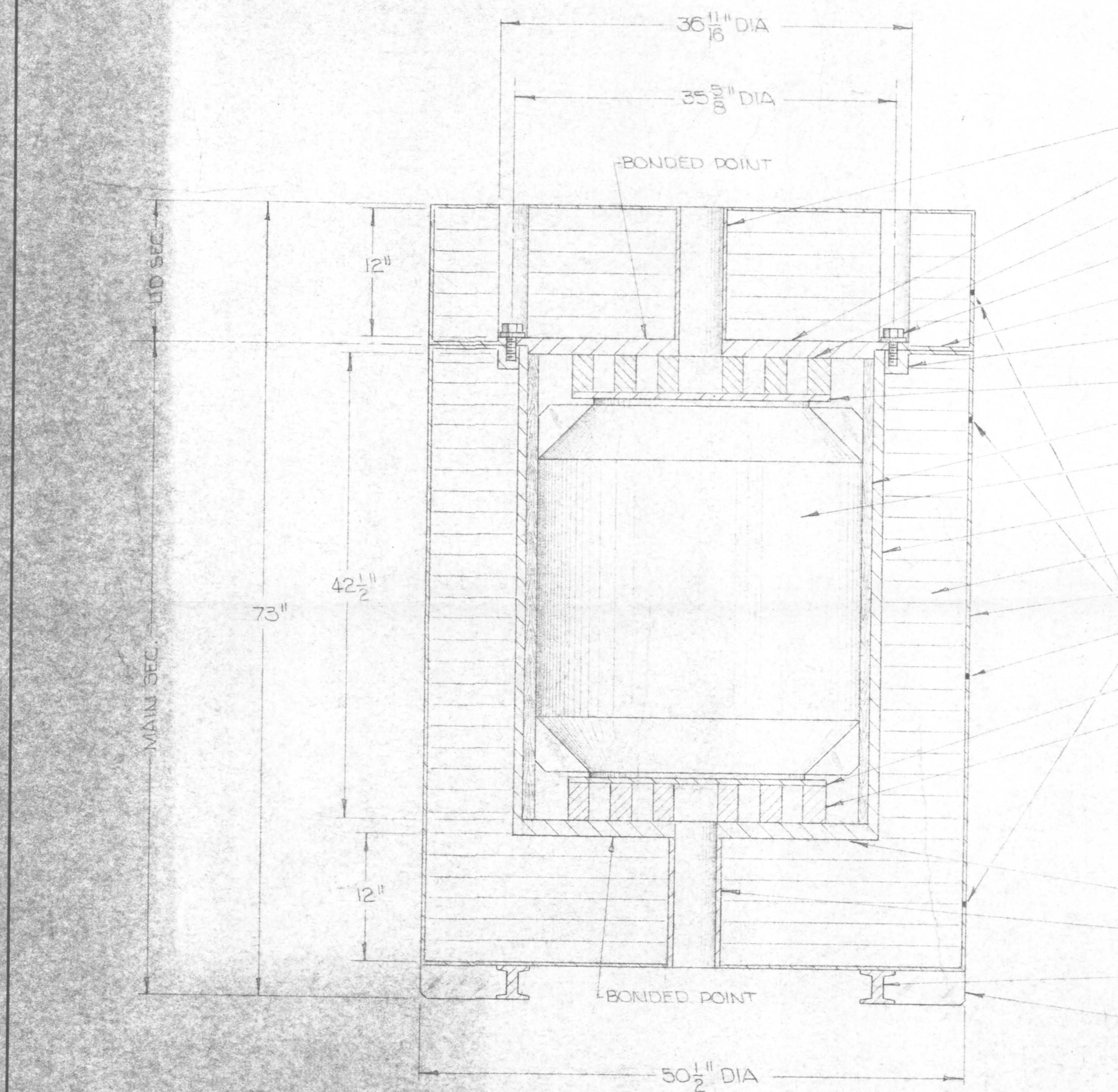


REVISIONS		
CHG A	4" STL PIPE TO 4 SCH 10 STL PIPE	2-10-70
CHG B	100% WELD TO 3/8 FILLET ALL AROUND	2-10-70
CHG C	10 LBS PER FT ³ TO 10-12 LBS PER FT ³	2-10-70
CHG D	1/8 EACH - 1/2" DIA. VENT HOLES-LOCATED IN 4 ROWS OF 4 HOLES EACH-PER CFR 178.194-2A(CB) 12 HOLES IN LOWER SECTION (MAIN BODY) OF OVERPACK-LOCATED 6" BELOW TOP, 6" ABOVE BOTTOM AND AT CENTERLINE. 4 HOLES LOCATED AT MIDPOINT OF UPPER SECTION (LID).	



- 4" SCH 10 STEEL PIPE
- 1/2" THK STEEL PLATE (BASE OF LID SEC)
- 3/4" THK STEEL SPACERS
- 5/8" BOLTS (125000 PSI HT) - 30 REQ'D, EVENLY SPACED
- 1/4" THK STEEL HEADER (TYP)
- THREADED SEC - 5/8" COUPLING NUTS, 3/8" FILLET WELD ALL AROUND TO INNER SHELL
- 1/2" THK STEEL PLATE
- HARDWOOD STACKS (7500 PSI) - 50% SURFACE CONTACT
- SOURCE SHIELD - SHIPPING CONFIGURATION
- 3/4" THK x 34 1/2" OD STEEL CYLINDER - INNER SHELL
- BALSA (10-12 LBS PER FT³) LAMINATED
- 1/4" THK STEEL SHELL - ALL AROUND
- TYPICAL VENT HOLE LOCATIONS-SEE CHANGE D ABOVE
- 1/2" THK STEEL PLATE
- 3/4" THK STEEL SPACERS
- NOTE: ALL STEEL FAB., WELD CONSTR.
- 1/2" THK STEEL BASE
- 4" SCH 10 STEEL PIPE
- 3"x3" STEEL I BEAM - 2 REQ'D
- 1/2" THK STEEL GUSSETS - 4 REQ'D

J. L. SHEPHERD and Associates		
SCALE:	APPROVED BY: <i>[Signature]</i>	DRAWN BY: RMH
DATE: 18 NOV 69		REVISED: MFS
D.O.T. OVERPACK		
GEN'L CONCEPT		DRAWING NUMBER: A-0117-B

17222 PRINTED ON NO. 1000H CLEARPRINT