

Date Entered: Feb 08, 2000

TO: USNRC/WASHINGTON
JMCKNIGHT
Copy Number: 145

TRANSMITTAL NUMBER: 141678

PROCEDURE NUMBER: EI-6.13

TITLE: PROTECTIVE ACTION RECOMMENDATIONS FOR
OFFSITE POPULATIONS

TRANSMITTAL: LISTED BELOW ARE NEW/REVISED PROCEDURES WHICH MUST BE
IMMEDIATELY INSERTED INTO OR DISCARDED FROM YOUR PROCEDURE
MANUAL.

Action Required	Section or Description
REMOVE AND DESTROY	EI-6.13, R/9, COVERSHEET AND ATTACHMENT 1, PAGE 1
REPLACE WITH	EI-6.13, R/9, COVERSHEET AND ATTACHMENT 1, PAGES 1 AND 2 EDITORIAL

SIGN, DATE, AND RETURN THE ACKNOWLEDGEMENT FORM WITHIN 10 DAYS TO THE PALISADES
PLANT DOCUMENT CONTROL.

SIGNATURE OR INITIALS

DATE

A045

PALISADES NUCLEAR PLANT
EMERGENCY IMPLEMENTING PROCEDURE

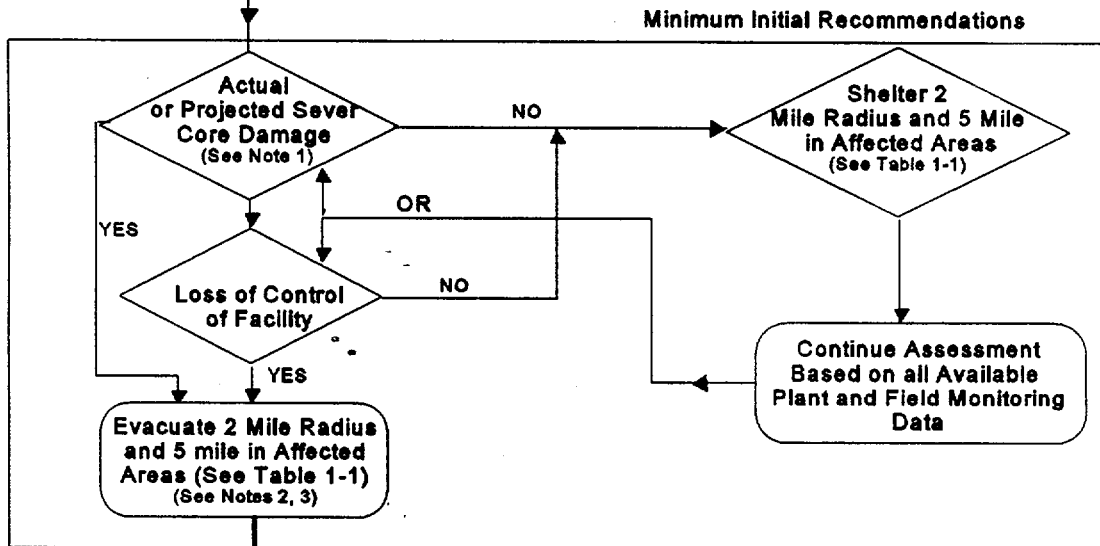
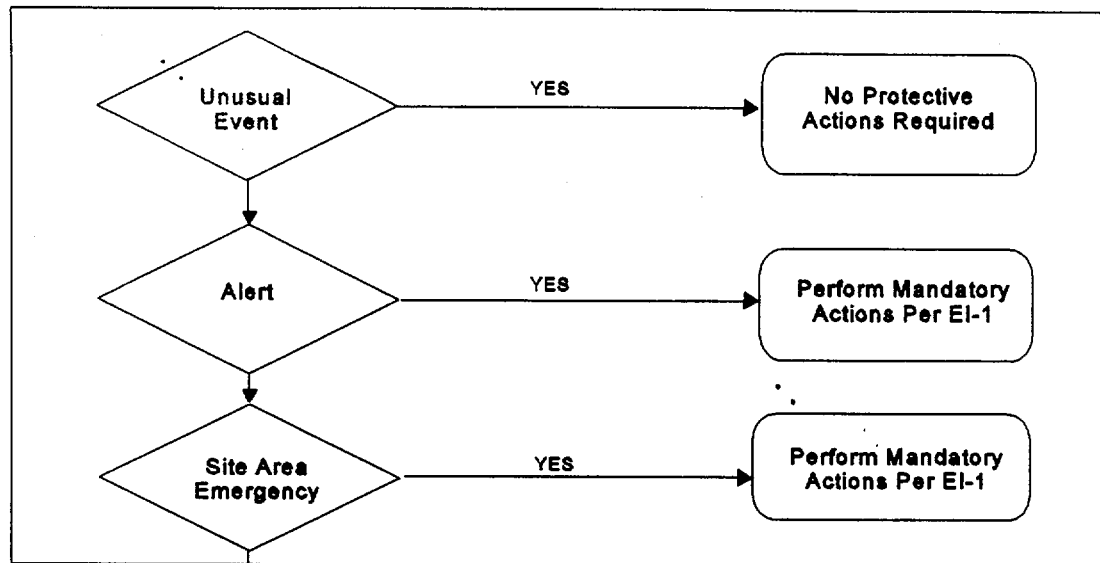
TITLE: PROTECTIVE ACTION RECOMMENDATIONS FOR OFFSITE POPULATIONS

QRB / 2/2/00
Procedure Sponsor Date

KLPenrod / 5/28/97
Technical Reviewer Date

TPNeal / 7/31/97
User Reviewer Date

**PROTECTIVE ACTION RECOMMENDATIONS
 FOR OFFSITE POPULATION**



GO TO "A" ON PAGE 2

Conversion Table 1-1
 (For PAR's Out To 5 Miles)
 Convert Wind Direction Degrees
 from to Downwind Areas

Wind direction Degrees (FROM):	Areas Affected:
> 169° and 236°	1 and 2
> 236° and 303°	1, 2, and 3
> 303° and 56°	1 and 3

NOTE 1: Server core damage is indicated by (1) loss of critical functions required for core protection (eg, loss of injection combined with a LOCA); (2) high core temperatures; (3) very high radiation levels in area or process monitors.