

February 4, 2000

U. S. Nuclear Regulatory Commission
Attn: Document Control Desk
Mail Stop P1-137
Washington, DC 20555-0001



ULNRC-4183

Gentlemen:

**DOCKET NUMBER 50-483
CALLAWAY PLANT UNIT 1
UNION ELECTRIC CO.
FACILITY OPERATING LICENSE NPF-30
Proposed Changes to NRC Resident Inspector Personnel Office Space
Re: 10 CFR 50.70(b)(2)**

The enclosed letter outlines proposed changes to the office facilities for the Commission Inspection Personnel assigned to the Callaway Plant pursuant to 10 CFR 50.70(b).

Please contact Mr. Mark Reidmeyer, AmerenUE Regional Regulatory Affairs Supervisor at 573/676-4306 if you have any questions or concerns regarding the proposed changes.

A handwritten signature in cursive script that reads "Joseph V. Laux".

Joseph V. Laux
Manager,
Quality Assurance

JVL:MAR/slk

Enclosure: Proposed Changes
Drawing of office area

A 001

ULNRC-4183
Callaway Plant
Page 2

cc: U. S. Nuclear Regulatory Commission (Original and 1 copy)
Attn: Document Control Desk
Mail Stop P1-137
Washington, DC 20555-0001

Mr. Ellis W. Merschoff
Regional Administrator
U.S. Nuclear Regulatory Commission
Region IV
611 Ryan Plaza Drive, Suite 400
Arlington, TX 76011-8064

Mr. William D. Johnson
Chief, Division of Reactor Projects, Branch B
U.S. Nuclear Regulatory Commission
Region IV
611 Ryan Plaza Drive, Suite 400
Arlington, TX 76011-8064

Senior Resident Inspector
Callaway Resident Office
U.S. Nuclear Regulatory Commission
8201 NRC Road
Steedman, MO 65077

Mr. Jack N. Donohew
Licensing Project Manager, Callaway Plant
Office of Nuclear Reactor Regulation
U. S. Nuclear Regulatory Commission
Mail Stop OWFN-4D3
Washington, DC 20555-2738

AmerenUE desires to remodel their cafeteria facilities to provide for improved food service, as well as resolve personal safety concerns stemming from overcrowding. In order to accomplish these objectives, it will be necessary to move portions of the wall located between the cafeteria and the Callaway Plant NRC Resident Inspector Office.

Guidance provided by 10 CFR 50.70(b)(2) suggests the space provided be adequate to accommodate a full-time inspector, a part-time secretary and transient NRC personnel and will be generally commensurate with other office facilities at the site. A space of 250 square feet either within the site's office complex or in an office trailer or other on-site space is suggested as a guide. For sites containing multiple power reactor units or fuel facilities, additional space may be requested to accommodate additional full-time inspector(s).

The proposed change will result in a total office area of 650 square feet. The office space specifically provided for the Senior Resident Inspector and the Resident Inspector is approximately 350 square feet and is unaffected by the proposed change. However, the general use area will be reduced from approximately 380 square feet to 300 square feet. This area is currently utilized for the part-time NRC secretary and a conference area. While this change is an imposition on the NRC staff, it is desired that the NRC office remain in the Service Building, which is the primary office building at Callaway.

It is our current practice to augment the designated NRC office space with conference rooms to support inspection efforts and visits by transient NRC personnel. In conjunction with the remodeling, additional electrical receptacles will be installed to accommodate the current complement of NRC office equipment.

The proposed changes will require relocation of the NRC telephone lines, as well as the computer network wiring and hardware. All required changes associated with the cafeteria remodeling to the telephone system wiring and computer network and hardware will be made at no cost to the NRC.

AmerenUE also recognizes the potential disruption to the NRC staff associated with the remodeling. It is our current intent to perform the bulk of the work during the evening hours to minimize the disruptions. Appropriate Security will be provided to control access to the NRC office during the period of construction when NRC personnel are not present.

Attached for reference are drawings of the current office area and the proposed change. The drawing scale is approximately 1/8 inch per foot.

The proposed changes have been discussed with the NRC Resident Inspector staff and Mr. William D. Johnson, Chief, Division of Reactor Projects, Branch B.

Existing

Cafeteria

Kitchen

NRC
Offices

SRI

RI

RAD CHEM
HALON BOTTLES } TUB1053A
TUB1053B

HRUB1059

24" RISER UP
VUB15019

LOCKE

DRY RO

SHOWER ROOM

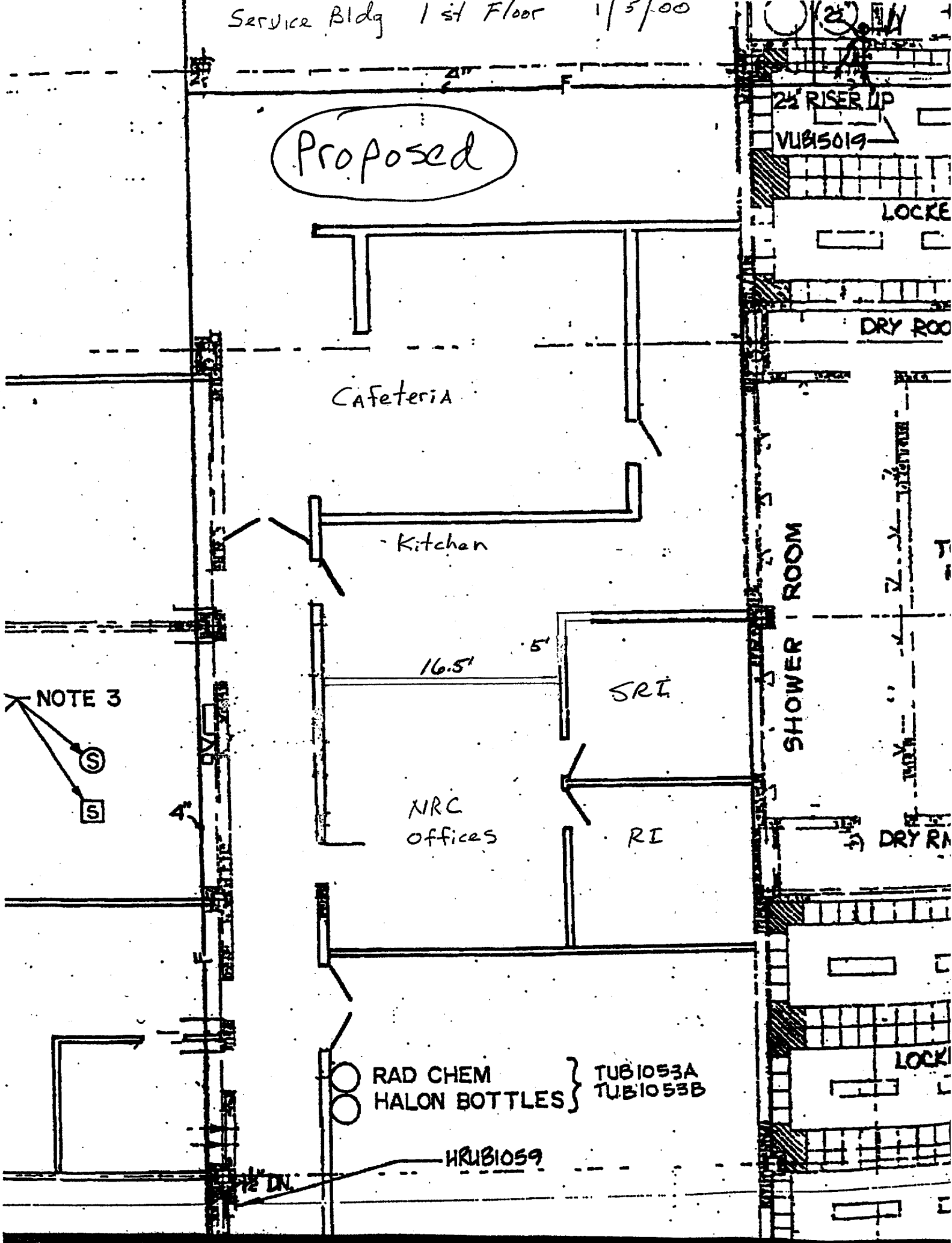
DRY R

LOCK

NOTE 3
S
S

1/2" DN

Proposed



Cafeteria

Kitchen

NRC
Offices

16.5'

5'

SRI

RI

SHOWER ROOM

RAD CHEM
HALON BOTTLES } TUB1053A
TUB1053B

HRUB1059

24' RISER UP
VUB15019

LOCKER

DRY ROOM

DRY ROOM

LOCKER

NOTE 3

S

S

1/2' DN

February 4, 2000

U. S. Nuclear Regulatory Commission
Attn: Document Control Desk
Mail Stop P1-137
Washington, DC 20555-0001



ULNRC-4183

Gentlemen:

**DOCKET NUMBER 50-483
CALLAWAY PLANT UNIT 1
UNION ELECTRIC CO.
FACILITY OPERATING LICENSE NPF-30
Proposed Changes to NRC Resident Inspector Personnel Office Space
Re: 10 CFR 50.70(b)(2)**

The enclosed letter outlines proposed changes to the office facilities for the Commission Inspection Personnel assigned to the Callaway Plant pursuant to 10 CFR50.70(b).

Please contact Mr. Mark Reidmeyer, AmerenUE Regional Regulatory Affairs Supervisor at 573/676-4306 if you have any questions or concerns regarding the proposed changes.

A handwritten signature in cursive script that reads "Joseph V. Laux".

Joseph V. Laux
Manager,
Quality Assurance

JVL:MAR/slk

Enclosure: Proposed Changes
Drawing of office area

ULNRC-4183
Callaway Plant
Page 2

cc: U. S. Nuclear Regulatory Commission (Original and 1 copy)
Attn: Document Control Desk
Mail Stop P1-137
Washington, DC 20555-0001

Mr. Ellis W. Merschoff
Regional Administrator
U.S. Nuclear Regulatory Commission
Region IV
611 Ryan Plaza Drive, Suite 400
Arlington, TX 76011-8064

Mr. William D. Johnson
Chief, Division of Reactor Projects, Branch B
U.S. Nuclear Regulatory Commission
Region IV
611 Ryan Plaza Drive, Suite 400
Arlington, TX 76011-8064

Senior Resident Inspector
Callaway Resident Office
U.S. Nuclear Regulatory Commission
8201 NRC Road
Steedman, MO 65077

Mr. Jack N. Donohew
Licensing Project Manager, Callaway Plant
Office of Nuclear Reactor Regulation
U. S. Nuclear Regulatory Commission
Mail Stop OWFN-4D3
Washington, DC 20555-2738

AmerenUE desires to remodel their cafeteria facilities to provide for improved food service, as well as resolve personal safety concerns stemming from overcrowding. In order to accomplish these objectives, it will be necessary to move portions of the wall located between the cafeteria and the Callaway Plant NRC Resident Inspector Office.

Guidance provided by 10 CFR 50.70(b)(2) suggests the space provided be adequate to accommodate a full-time inspector, a part-time secretary and transient NRC personnel and will be generally commensurate with other office facilities at the site. A space of 250 square feet either within the site's office complex or in an office trailer or other on-site space is suggested as a guide. For sites containing multiple power reactor units or fuel facilities, additional space may be requested to accommodate additional full-time inspector(s).

The proposed change will result in a total office area of 650 square feet. The office space specifically provided for the Senior Resident Inspector and the Resident Inspector is approximately 350 square feet and is unaffected by the proposed change. However, the general use area will be reduced from approximately 380 square feet to 300 square feet. This area is currently utilized for the part-time NRC secretary and a conference area. While this change is an imposition on the NRC staff, it is desired that the NRC office remain in the Service Building, which is the primary office building at Callaway.

It is our current practice to augment the designated NRC office space with conference rooms to support inspection efforts and visits by transient NRC personnel. In conjunction with the remodeling, additional electrical receptacles will be installed to accommodate the current complement of NRC office equipment.

The proposed changes will require relocation of the NRC telephone lines, as well as the computer network wiring and hardware. All required changes associated with the cafeteria remodeling to the telephone system wiring and computer network and hardware will be made at no cost to the NRC.

AmerenUE also recognizes the potential disruption to the NRC staff associated with the remodeling. It is our current intent to perform the bulk of the work during the evening hours to minimize the disruptions. Appropriate Security will be provided to control access to the NRC office during the period of construction when NRC personnel are not present.

Attached for reference are drawings of the current office area and the proposed change. The drawing scale is approximately 1/8 inch per foot.

The proposed changes have been discussed with the NRC Resident Inspector staff and Mr. William D. Johnson, Chief, Division of Reactor Projects, Branch B.

Existing

Cafeteria

Kitchen

NRC
offices

SRI

RI

RAD CHEM
HALON BOTTLES } TUB1053A
TUB1053B

HRUB1059

24" RISER UP
VUB15019

LOCKE

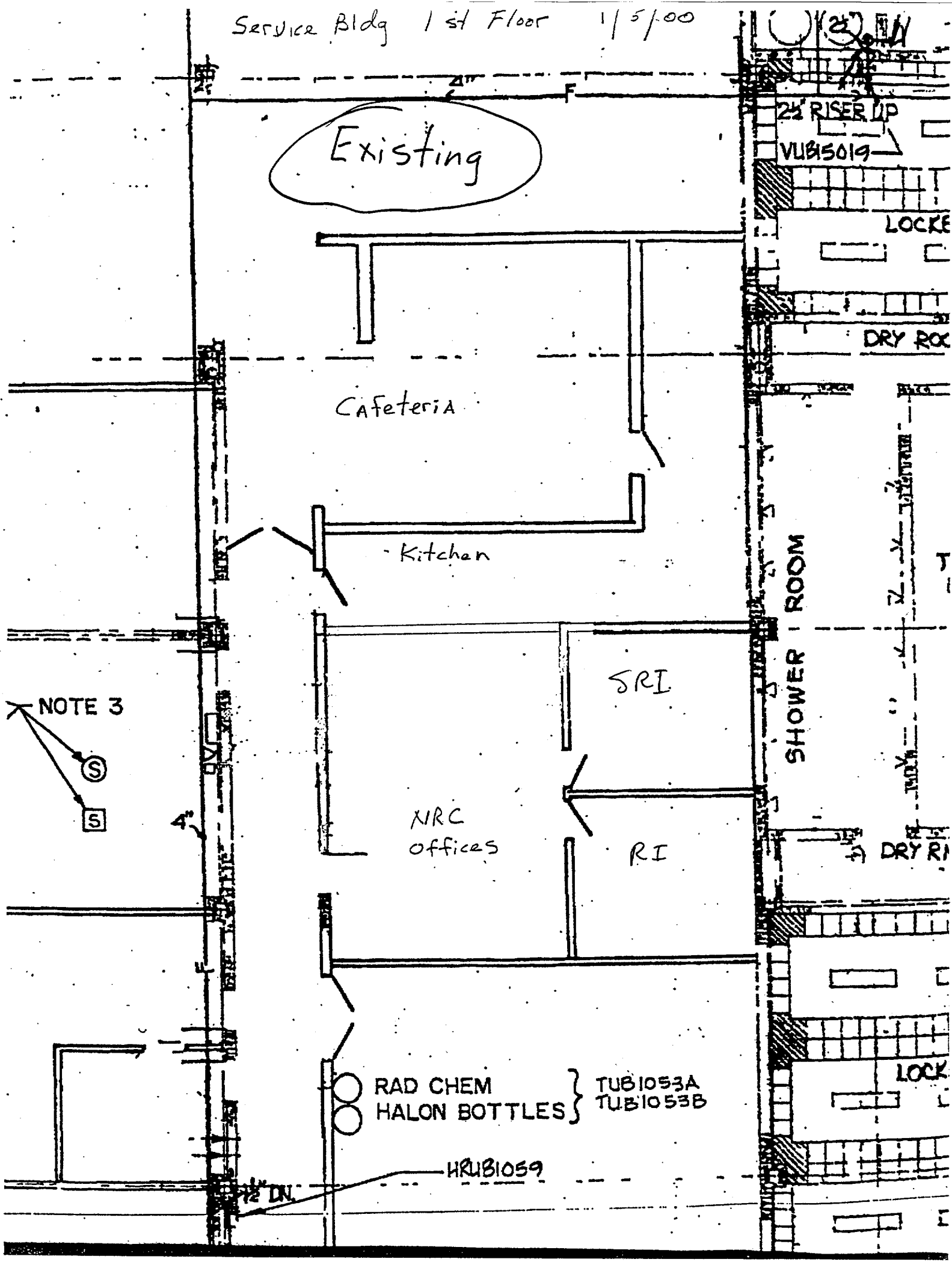
DRY RO

SHOWER ROOM

DRY RI

LOCK

NOTE 3
S
S



Proposed

Cafeteria

Kitchen

NRC
Offices

SRI

RI

RAD CHEM
HALON BOTTLES } TUB1053A
TUB1053B

HRUB1059

24' RISER UP
VUB15019

LOCKE

DRY ROO

SHOWER ROOM

DRY RN

LOCKE

