
***COMED BOILING WATER REACTOR
IMPROVED TECHNICAL
SPECIFICATIONS (ITS)/24 MONTH
CYCLE TECHNICAL SPECIFICATIONS***

February 7, 2000

NRC

Rockville, MD.

Agenda

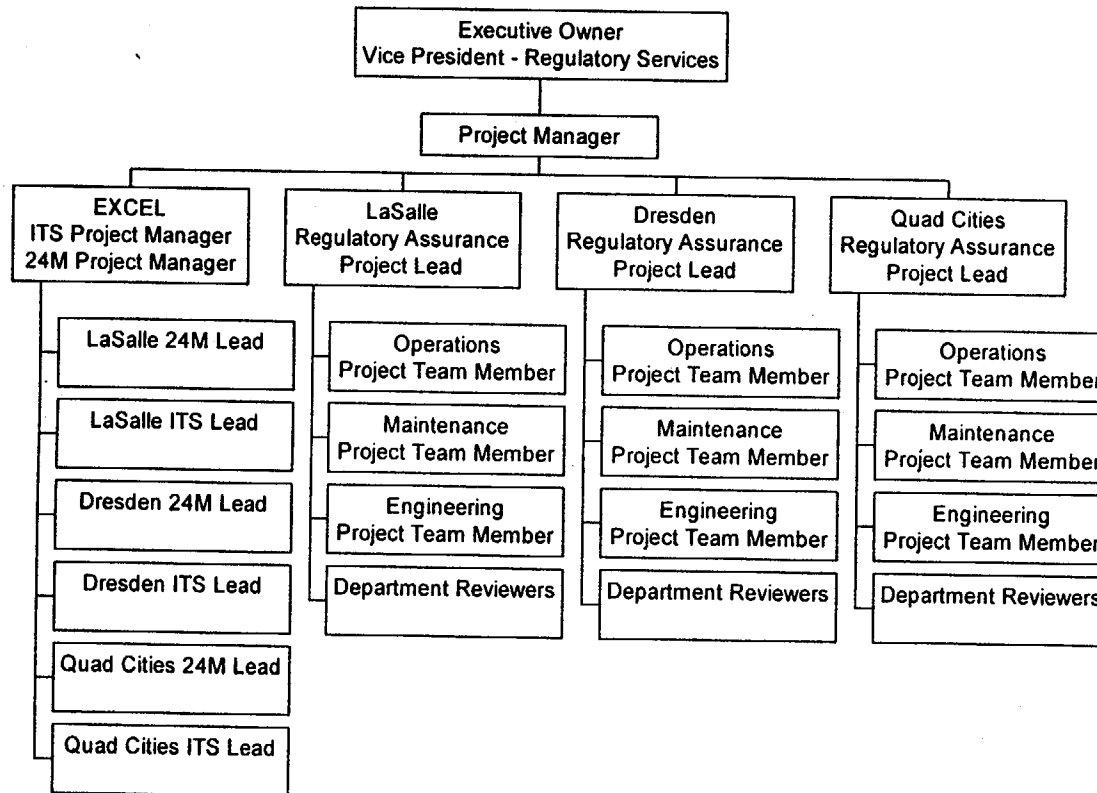
- **Opening Remarks**
- **Project Overview**
- **Milestones**

ComEd BWR ITS/24 Month Project Overview

- **ComEd BWR ITS/24 Month Organization**
 - **Stations Integrally Involved in ITS Development**
 - **Multi-Disciplined ITS/24 Month Core Teams at each Station**
 - **Staffed with Experienced Personnel**
 - + **Regulatory Assurance**
 - + **Operations**
 - + **Engineering**
 - + **Maintenance**

ComEd BWR ITS/24 Month Project Overview

ComEd BWR ITS/24 Month Organization



ComEd BWR ITS/24 Month Project Overview

- **ComEd BWR ITS/24 Month Development**
 - **Three Site ITS/24 Month Submittal Reflects Current Standards**
 - + **NUREG-1433, Revision 1, Standard Technical Specifications General Electric Plants, BWR/4 (Dresden and Quad Cities)**
 - + **NUREG-1434, Revision 1, Standard Technical Specifications General Electric Plants, BWR/6 (LaSalle)**
 - + **NEI 96-06, Improved Technical Specifications Conversion Guidance**
 - + **NRC Administrative Letter 96-04, Efficient Adoption of Improved Standard Technical Specifications**
 - + **NRC Generic Letter 91-04, Changes to Technical Specifications Surveillance Intervals to Accommodate a 24-Month Surveillance Interval**
 - + **Approved Technical Specifications Task Force Generic Changes**

ComEd BWR ITS/24 Month Project Overview

- **ComEd BWR ITS/24 Month Development (continued)**
 - **ITS/24 Month Submittal Incorporates Lessons Learned**
 - + **Modeled after Nine Mile Point 2 (NMP2) ITS/24 Month Submittal**
 - + **Includes changes resulting from NMP2 ITS/24 Month Requests for Additional Information**
 - + **Maintained Frequent Contact as NMP2 ITS/24 Month Submittal was reviewed by NRC**
 - + **Includes Lessons Learned from the recent Perry 24 Month Submittal**

ComEd BWR ITS/24 Month Project Overview

- **ComEd BWR ITS/24 Month Development (continued)**
 - **Common ITS Across Three ComEd BWRs, Where Practicable**
 - + **Consistency with Improved Standard Technical Specifications**
 - + **Consistency Among ComEd BWR Sites**
 - ◆ **Exceptions Limited to Areas of Design Differences, Analysis Differences, and Current Licensing Basis Differences**

ComEd BWR ITS/24 Month Project Overview

- **ComEd BWR ITS/24 Month Development (continued)**
 - **Submittal Includes Allowable Value and Setpoint Reconstitution**
 - + **Utilizes ComEd Setpoint Methodology**
 - ◆ **Dresden**
 - ◆ **LaSalle**
 - ◆ **Quad Cities**
 - + **Calculations in Process**
 - ◆ **Certain Population Will Not Be Done by Submittal**
 - **Time Delay Relays**
 - **Mechanical Devices**
 - **Submittal Includes 24 Month Surveillance Interval Extensions**

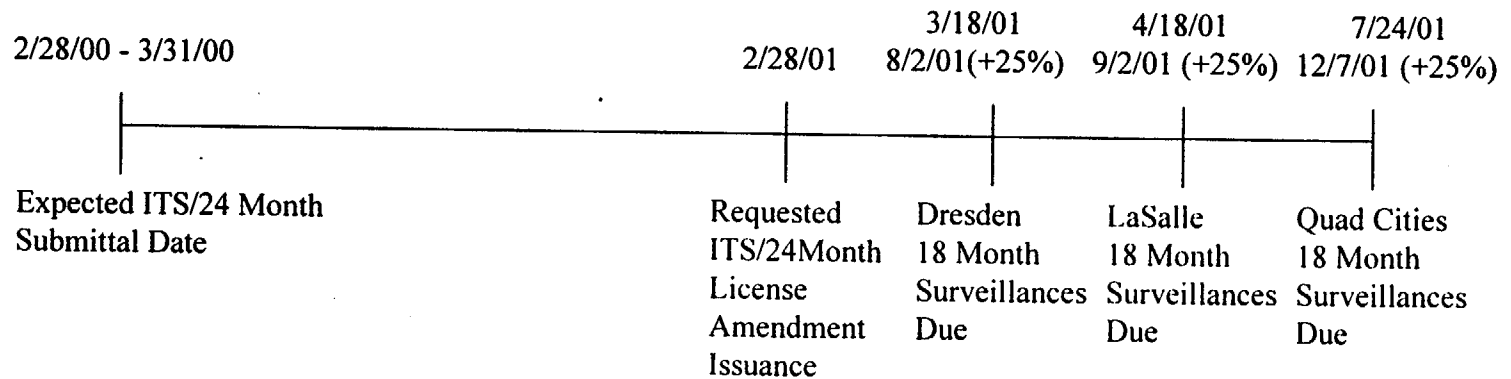
ComEd BWR ITS/24 Month Project Overview

- **ComEd BWR ITS/24 Month Development (continued)**
 - **ITS/24 Month Submittal Includes Concurrent Submittals
+ Dresden**
 - ◆ **Instrumentation Allowed Outage Times/Surveillance Test Intervals Extension**
 - ◆ **Condensate Storage Tank Low Water Level High Pressure Coolant Injection System Suction Swap Instrumentation**
 - ◆ **Pressure/Temperature Limits Curves**
 - ◆ **Elimination of 900lb Electro-Hydraulic Control Reactor Protection System (RPS) Scram**
 - ◆ **Diesel Generator Voltage Tolerance Change**
 - ◆ **Target Rock Safety/Relief Valve**

ComEd BWR ITS/24 Month Project Overview

- **ComEd BWR ITS/24 Month Development (continued)**
 - **ITS/24 Month Submittal Includes Concurrent Submittals**
 - + **LaSalle**
 - ◆ **Pressure/Temperature Limits Curves**
 - + **Quad Cities**
 - ◆ **Instrumentation Allowed Outage Times/Surveillance Test Intervals Extension**
 - ◆ **Diesel Generator Voltage Tolerance Change**
 - ◆ **Elimination of Main Steam Line Radiation Monitor RPS Scram and Primary Containment Isolation**

ComEd BWR ITS/24 Month Milestones



ComEd BWR ITS/24 Month Milestones

-
- **Single NRC ITS Project Manager Requested**
 - **Help Ensure Consistency is Maintained During NRC Review Process**
 - **Requested NRC Review Supports Our Operating Milestones**
 - **Allows One Year Review**
 - **Necessary to Avoid Mid-Cycle Surveillance Outages**
 - **ComEd Will Provide Resources Necessary to Support Requested NRC Review Schedule**