

Sample Letter

RECEIVED
JAN 27 1990

'00 JAN 27 P 3:30

Dear Chairman Meserve:

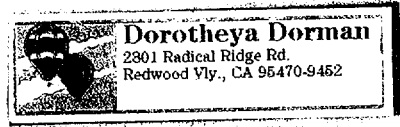
I am calling on the Nuclear Regulatory Commission to stop the recycling of radioactive waste into consumer products and to isolate these materials and anything they contaminate. The public must not be exposed to the radioactive legacy of atomic energy and weapons production.

Using radioactive waste in consumer products poses unnecessary, avoidable and involuntary risks that consumers, producers and the raw materials industries don't want. Naturally occurring radiation cannot be avoided, but its presence in no way justifies the additional radiation exposures that the NRC plans to allow in products we use every day.

The NRC should extend the comment period on its proposal to release radioactive waste into the marketplace until September 2000. This issue is too important to act hastily upon and it should be fully debated by the public.

Sincerely,

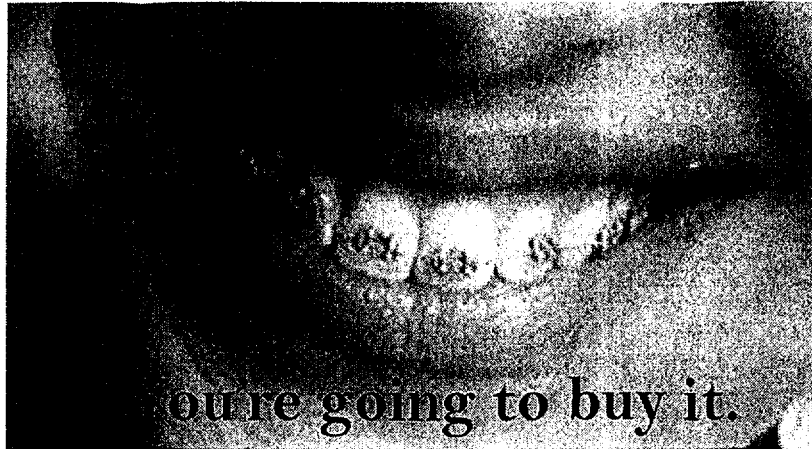
Your Name



Mail comments to: **Chairman Richard Meserve**
Attention: Rulemaking and Adjudications Staff
U.S. Nuclear Regulatory Commission
Washington, DC 20555

2510

Smile: The government has a solution for the nuclear waste problem.



The Nuclear Regulatory Commission (NRC) and the nuclear industry are scheming to “recycle” radioactive waste into innumerable products such as braces for teeth, frying pans, belt buckles—virtually anything made out of steel, nickel, copper, or aluminum.

Although the government already allows atomic waste into the market place on a case-by-case basis, the NRC is trying to legalize the routine release of massive amounts of radioactive metal, concrete, plastic, soil and other material from commercial nuclear power and weapons sites.

What you can do: The NRC is required to consider all potential impacts and options before allowing the wide-scale release of radioactive materials into the market place. They are accepting public comments until December 22, 1999. **Tell the NRC that increasing the public's exposure to radiation is unacceptable; the only option is to halt this process immediately!**

(See sample letter on opposite page)



Critical Mass Energy Project
215 Pennsylvania Ave., SE
Washington, DC 20003
(202)546-4996
www.citizen.org/cmep