



2000 JAN 12 PM 4:11

Environmental Health and Safety
The Pennsylvania State University
6 Eisenhower Parking Deck
University Park, PA 16802-2116(814) 865-6391
Fax: (814) 863-7427
Website: <http://www.ehs.psu.edu>

January 7, 2000

Sattar Lodhi
U.S. Nuclear Regulatory Commission
Nuclear Materials Safety Branch, Region I
475 Allendale Road
King of Prussia, PA 19406

Subject: General License, New Kensington Exit Signs

Dear Mr. Lodhi:

As indicated in the letter dated December 15, 1999, a contamination survey has been completed at the New Kensington campus. Locations surveyed included the areas in which the self-luminous exit signs had been installed and several additional buildings, including the gymnasium and a residential area. All smears were indistinguishable from background. The liquid scintillation counter's MDA is $2.0 \times 10^{-6} \mu\text{Ci} / 100 \text{ cm}^2$.

If you have any further questions or require more information, please contact either Eric Boeldt or myself at (814) 865-6391.

Sincerely,

M. E. Linsley
Associate Health Physicist
Environmental Health and Safety / Radiation Protection Group
Mel18@psu.edu

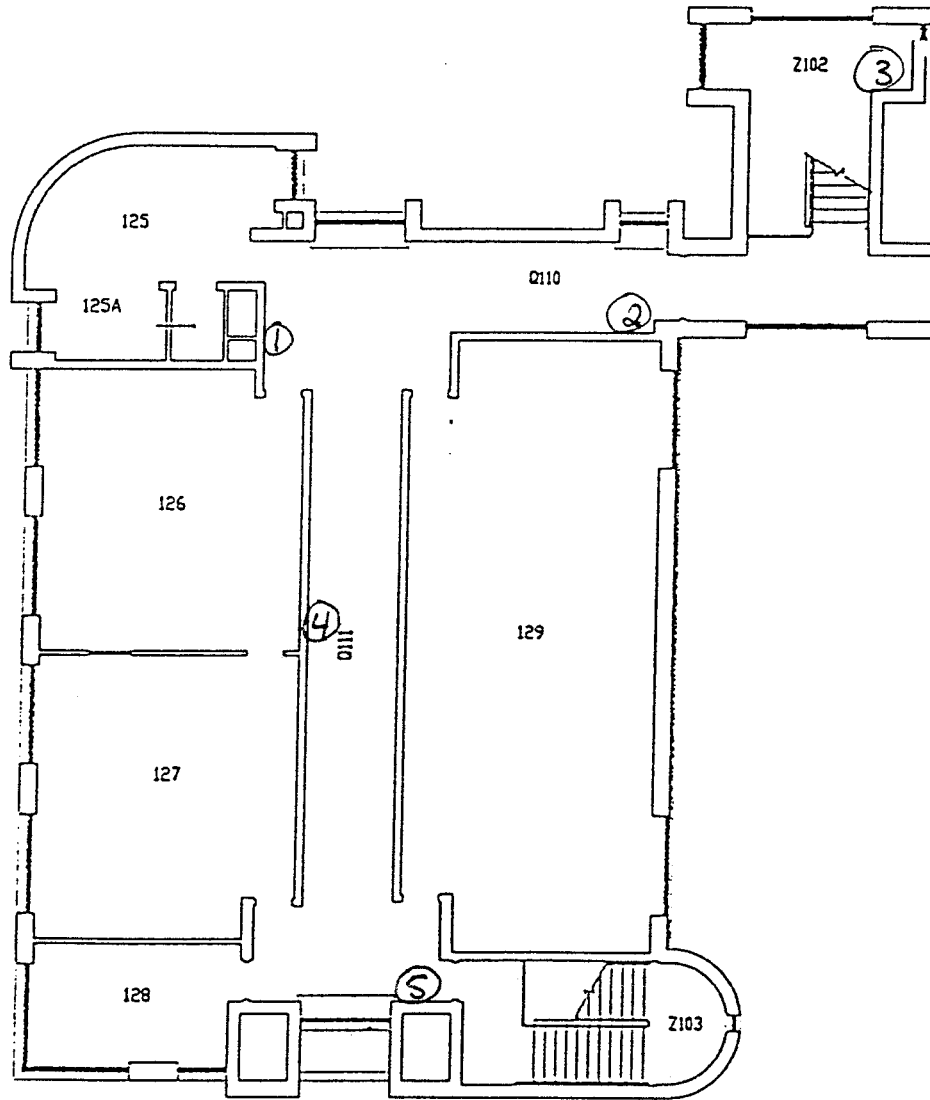
MEL/mel

Attachments: Copy of maps identifying survey locations (12 pages)

cc without attachments: William J. Anderson, Jr.

Eric Boeldt
Maurine Claver
Robert Finley
Richard Manslow (New Kensington)
Steve Maruszewski
Carol Rush (New Kensington)
Eva Pell
Gary Schultz

TECH
UPPER FLOOR

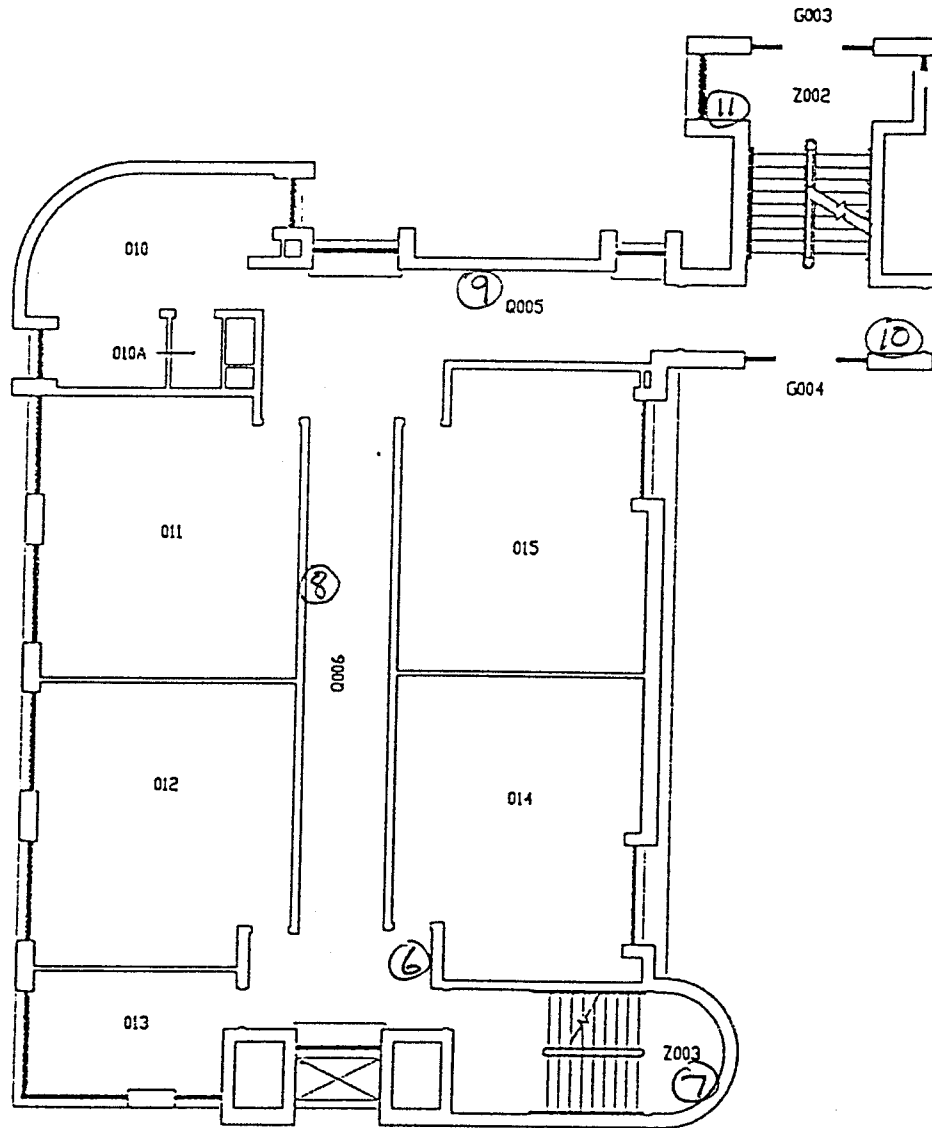


0981-06
SCIENCE & TECHNOLOGY CENTER
FIRST FLOOR PLAN

THE PENNSYLVANIA STATE UNIVERSITY
OFFICE OF THE PHYSICAL PLANT
NEW KENSINGTON CAMPUS

SCALE:

TECH
LOWER FLOOR

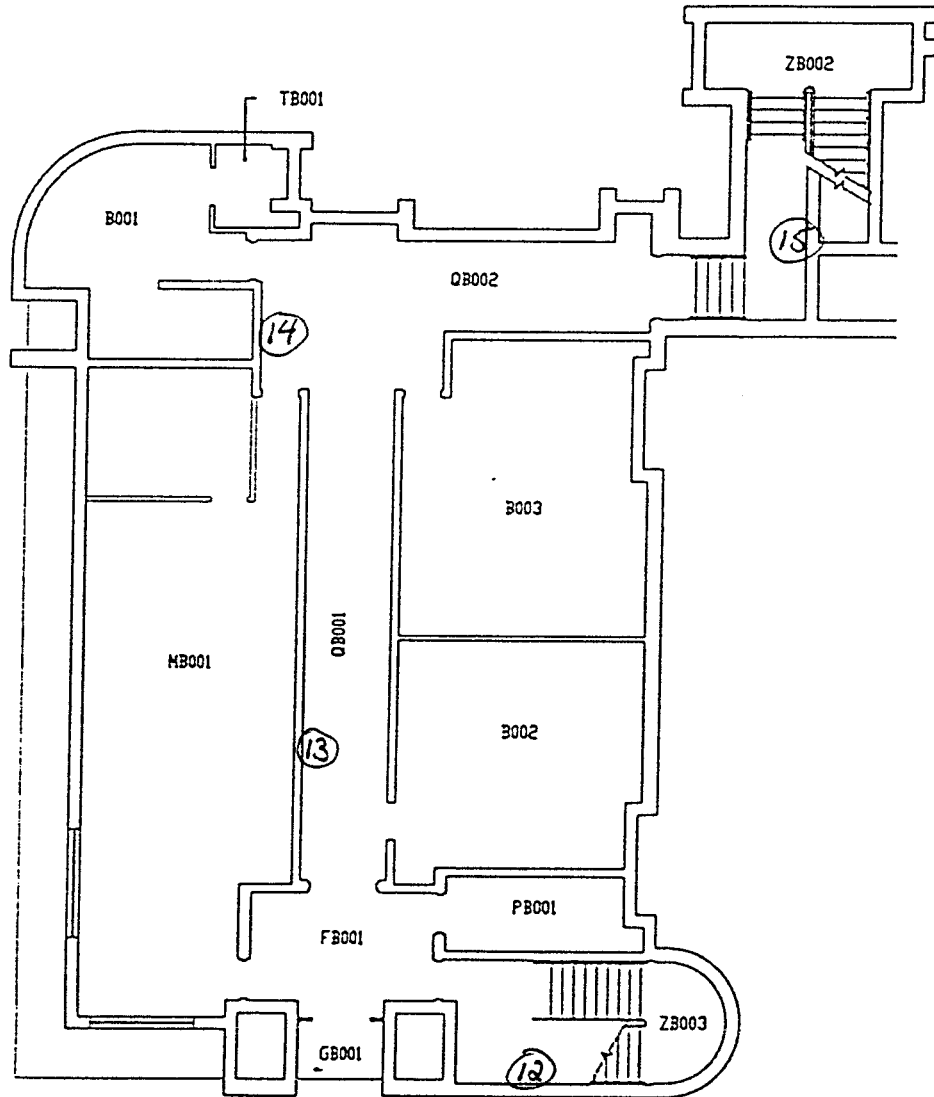


0981-006
SCIENCE & TECHNOLOGY CENTER
GROUND FLOOR PLAN

THE PENNSYLVANIA STATE UNIVERSITY
OFFICE OF THE PHYSICAL PLANT
NEW KENSINGTON CAMPUS

SCALE: 1/8" = 1'-0"

TECH
BASEMENT

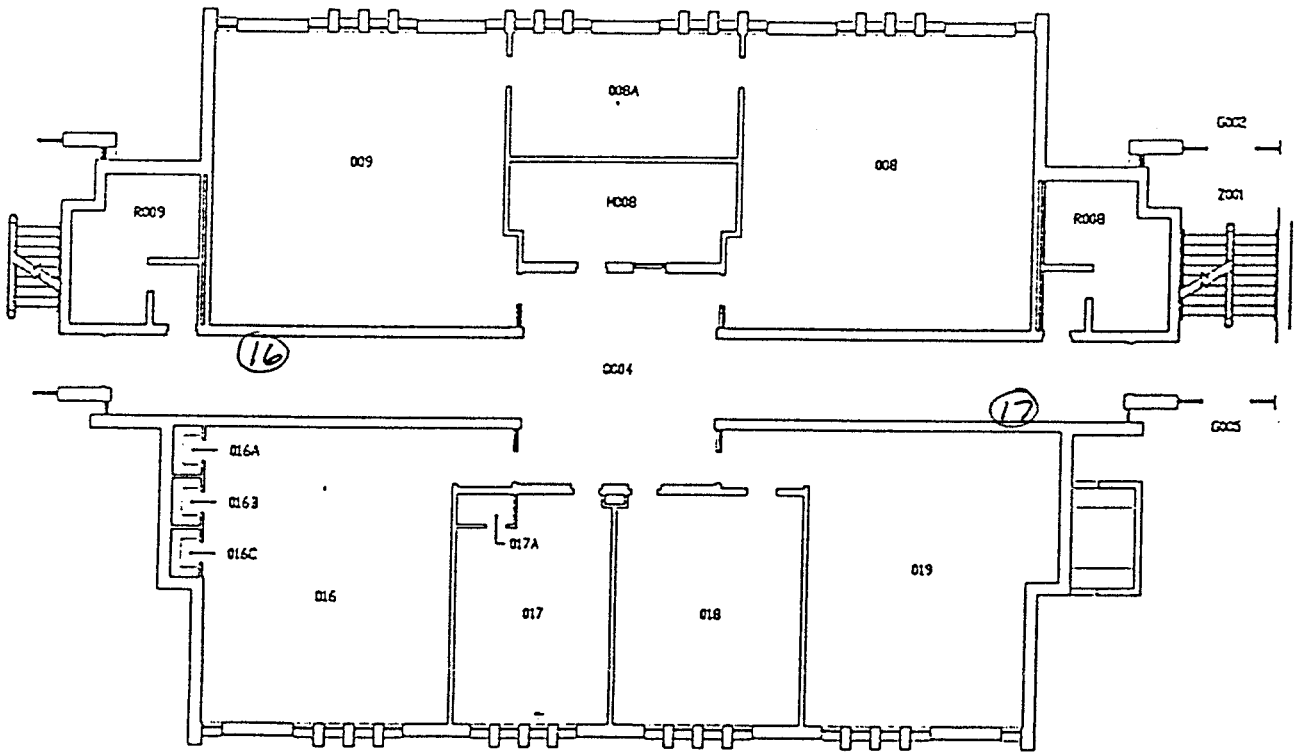


0981-06
SCIENCE & TECHNOLOGY CENTER
BASEMENT PLAN

THE PENNSYLVANIA STATE UNIVERSITY
OFFICE OF THE PHYSICAL PLANT
NEW KENSINGTON CAMPUS

SCALE: 1/4" = 1'-0"

ENGR
LOWER FLOOR

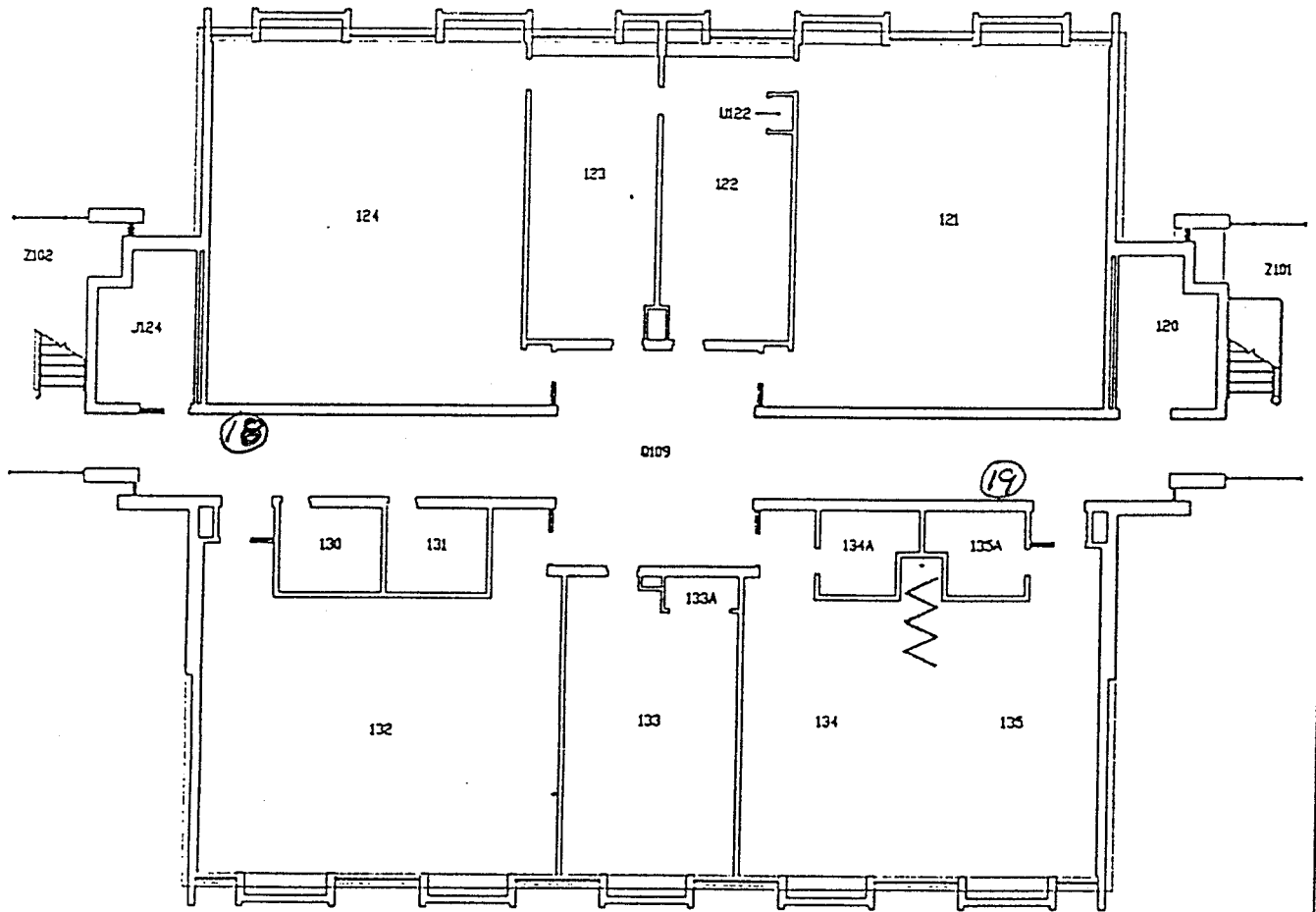


0981-002
ENGINEERING BUILDING
GROUND FLOOR PLAN

THE PENNSYLVANIA STATE UNIVERSITY
OFFICE OF THE PHYSICAL PLANT
NEW KENSINGTON CAMPUS

SCALE: 1/4" = 1'-0"

ENGR
UPPER FLOOR

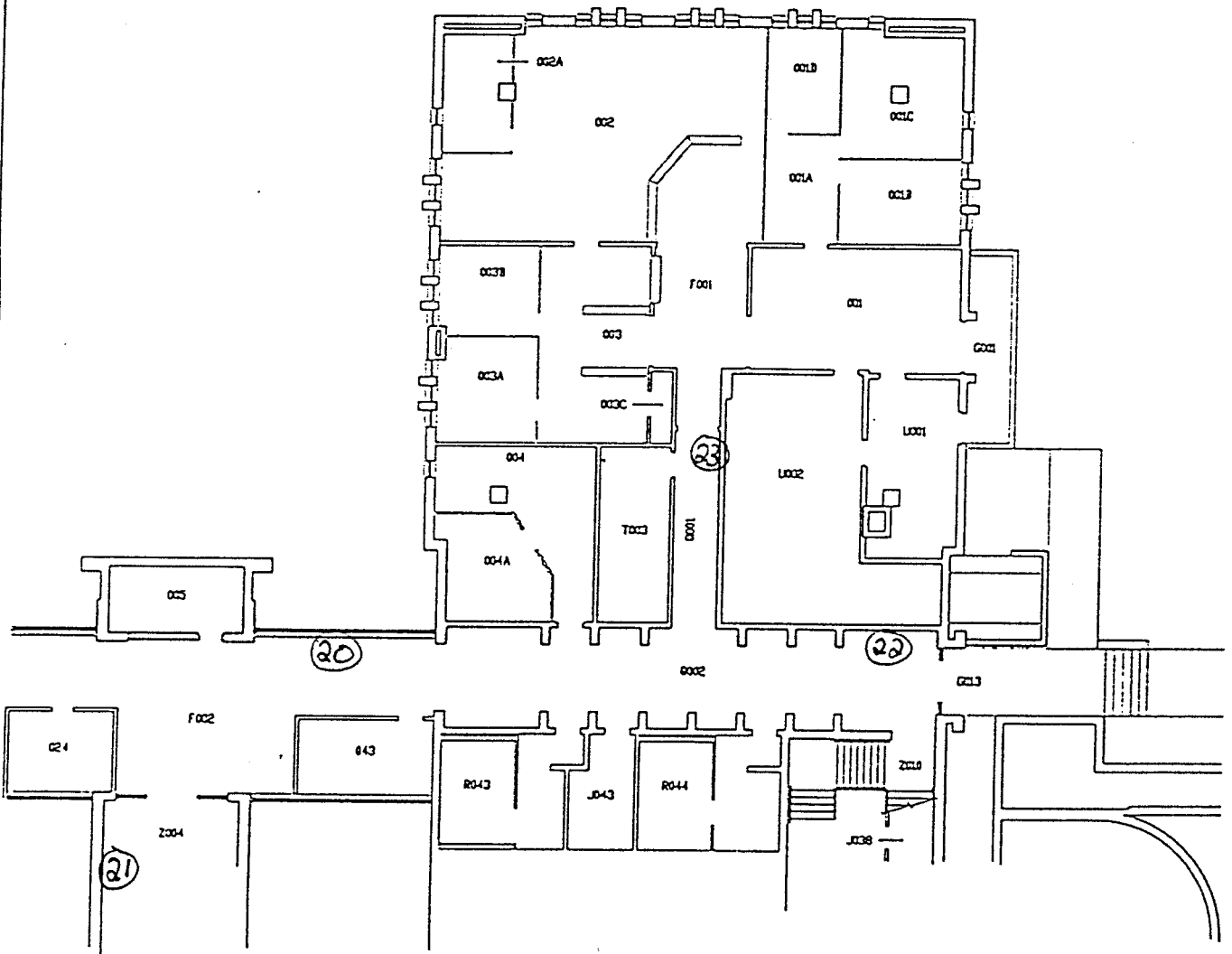


0981-005
ENGINEERING BUILDING
FIRST FLOOR PLAN

THE PENNSYLVANIA STATE UNIVERSITY
OFFICE OF THE PHYSICAL PLANT
NEW KENSINGTON CAMPUS

SCALE: 1/8" = 1'-0"

ADMIN
LOWER FLOOR



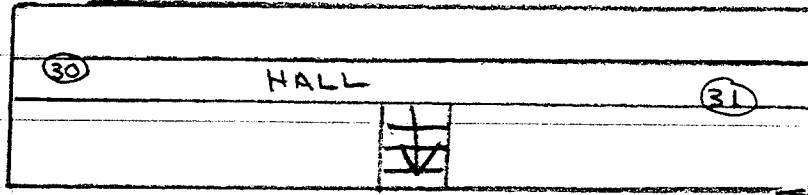
0981-05
FACULTY & ADMINISTRATION BUILDING
GROUND FLOOR PLAN

THE PENNSYLVANIA STATE UNIVERSITY
OFFICE OF THE PHYSICAL PLANT
NEW KENSINGTON CAMPUS

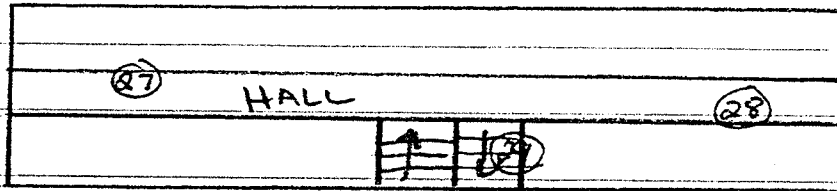
SCALE: 1/8" = 1'-0"

NITTANY APARTMENTS - NOT TO SCALE

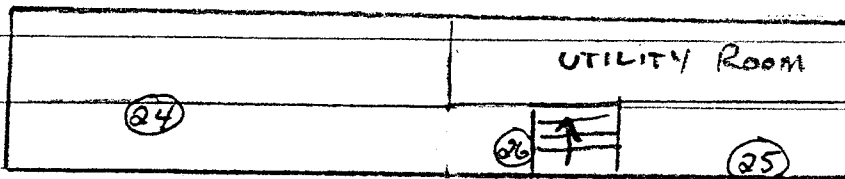
UPPER FLOOR



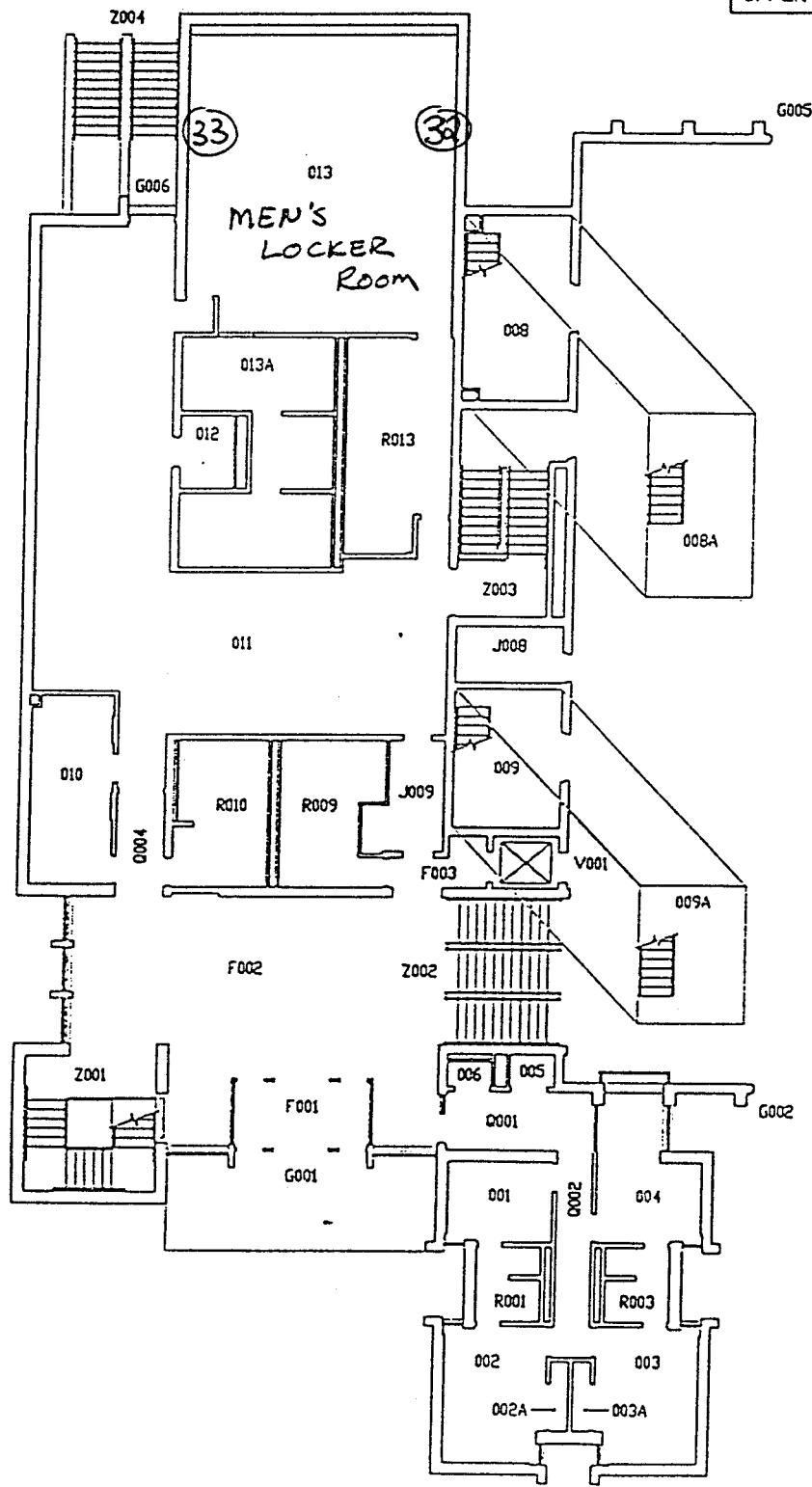
FIRST FLOOR



BASEMENT

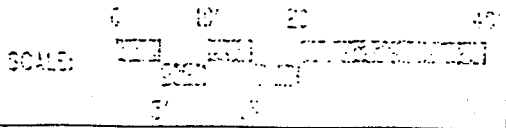


GYM
UPPER FLOOR 1

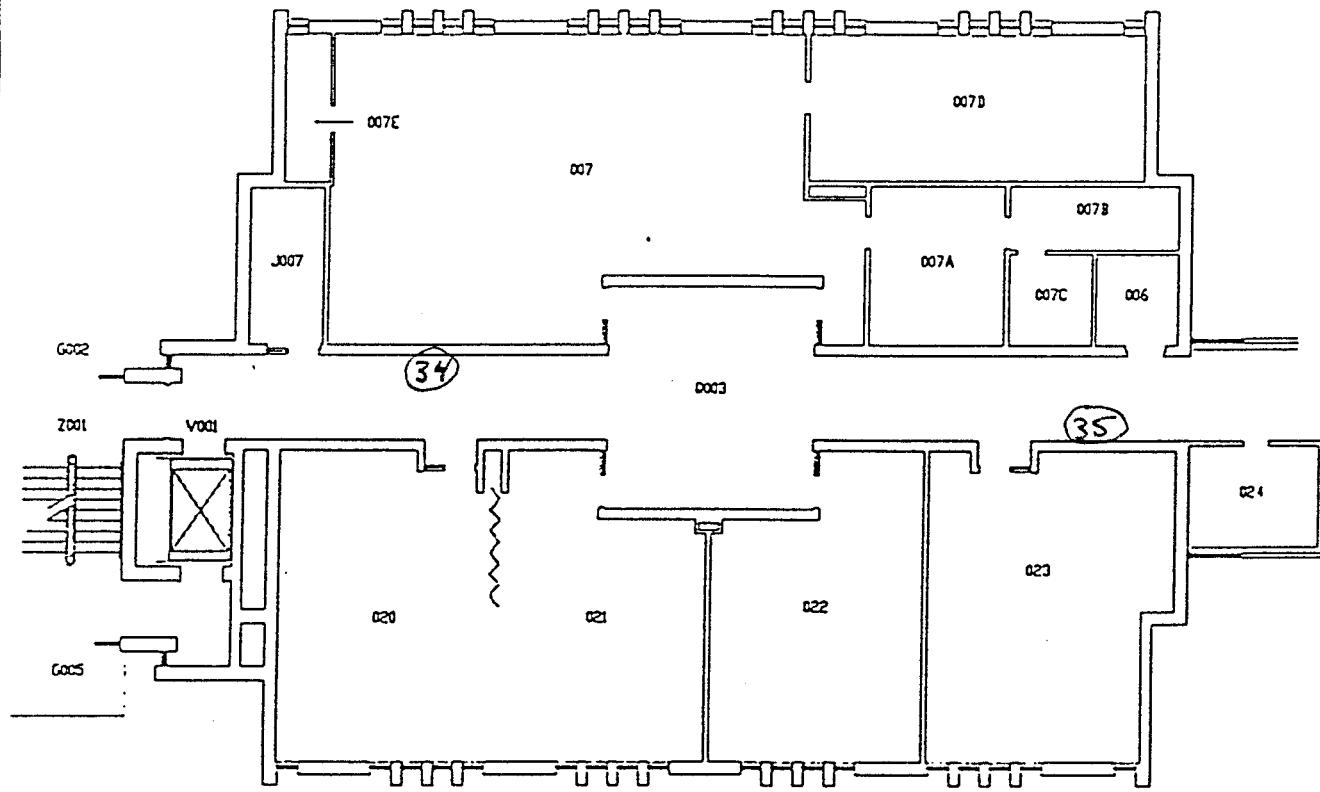


0981-006
GYMNASIUM & FACULTY ROOMS
FIRST FLOOR PLAN

THE PENNSYLVANIA STATE UNIVERSITY
OFFICE OF THE PHYSICAL PLANT
NEW KENSINGTON CAMPUS



SCI
LOWER FLOOR



0981-001
SCIENCE BUILDING
GROUND FLOOR PLAN

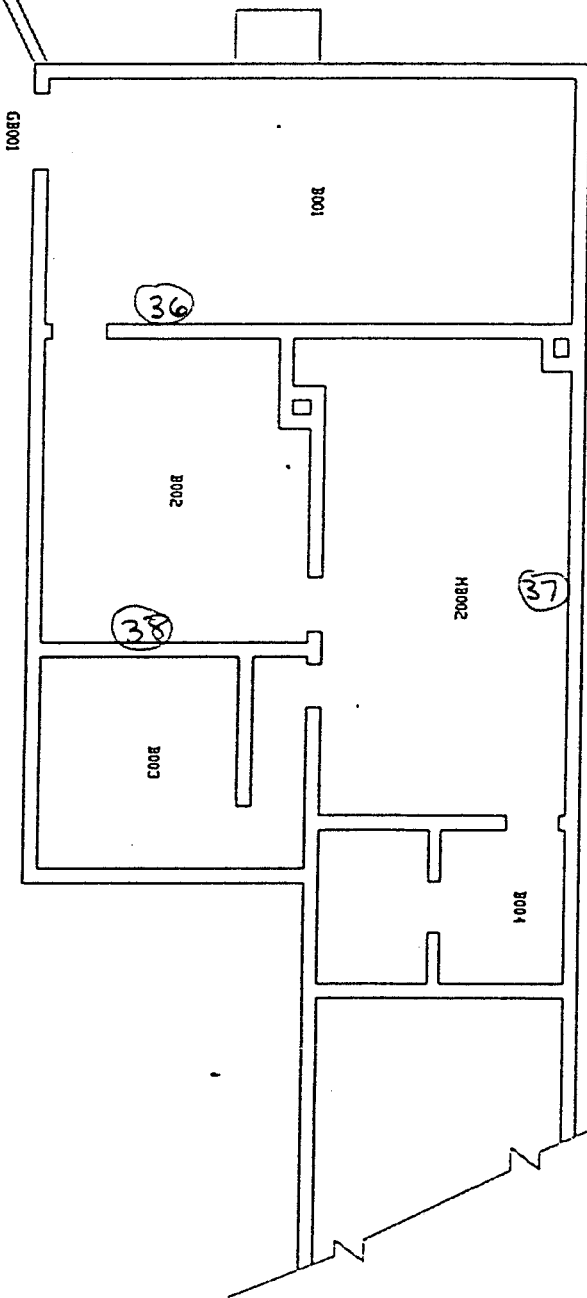
THE PENNSYLVANIA STATE UNIVERSITY
OFFICE OF THE PHYSICAL PLANT
NEW KENSINGTON CAMPUS

SCALE: 1/8" = 1'-0"
DRAWN BY: [illegible]
CHECKED BY: [illegible]

UNIV HOUSE
LOWER FLOOR

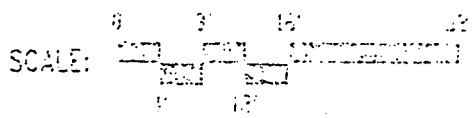
EXISTING
RETAINING WALL

10000

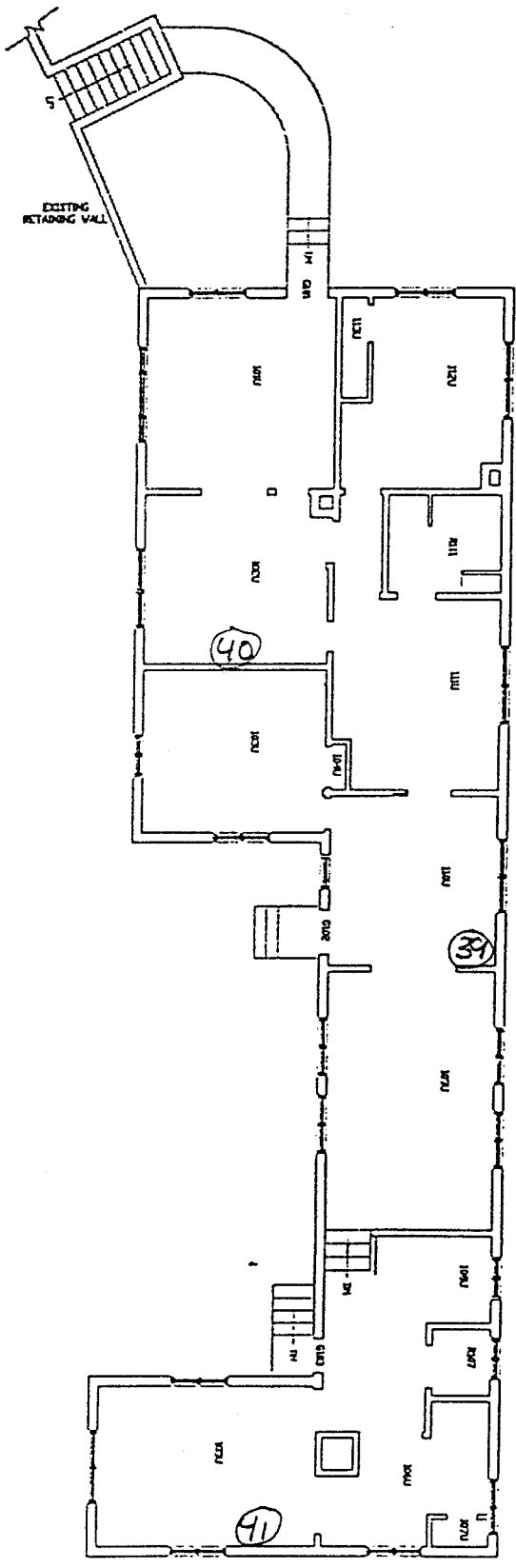


0981-044
HOY HOUSE
BASEMENT FLOOR PLAN

THE PENNSYLVANIA STATE UNIVERSITY
OFFICE OF THE PHYSICAL PLANT
NEW KENSINGTON CAMPUS

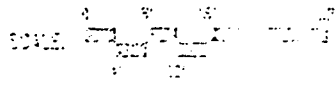


UNIV HOUSE
UPPER FLOOR

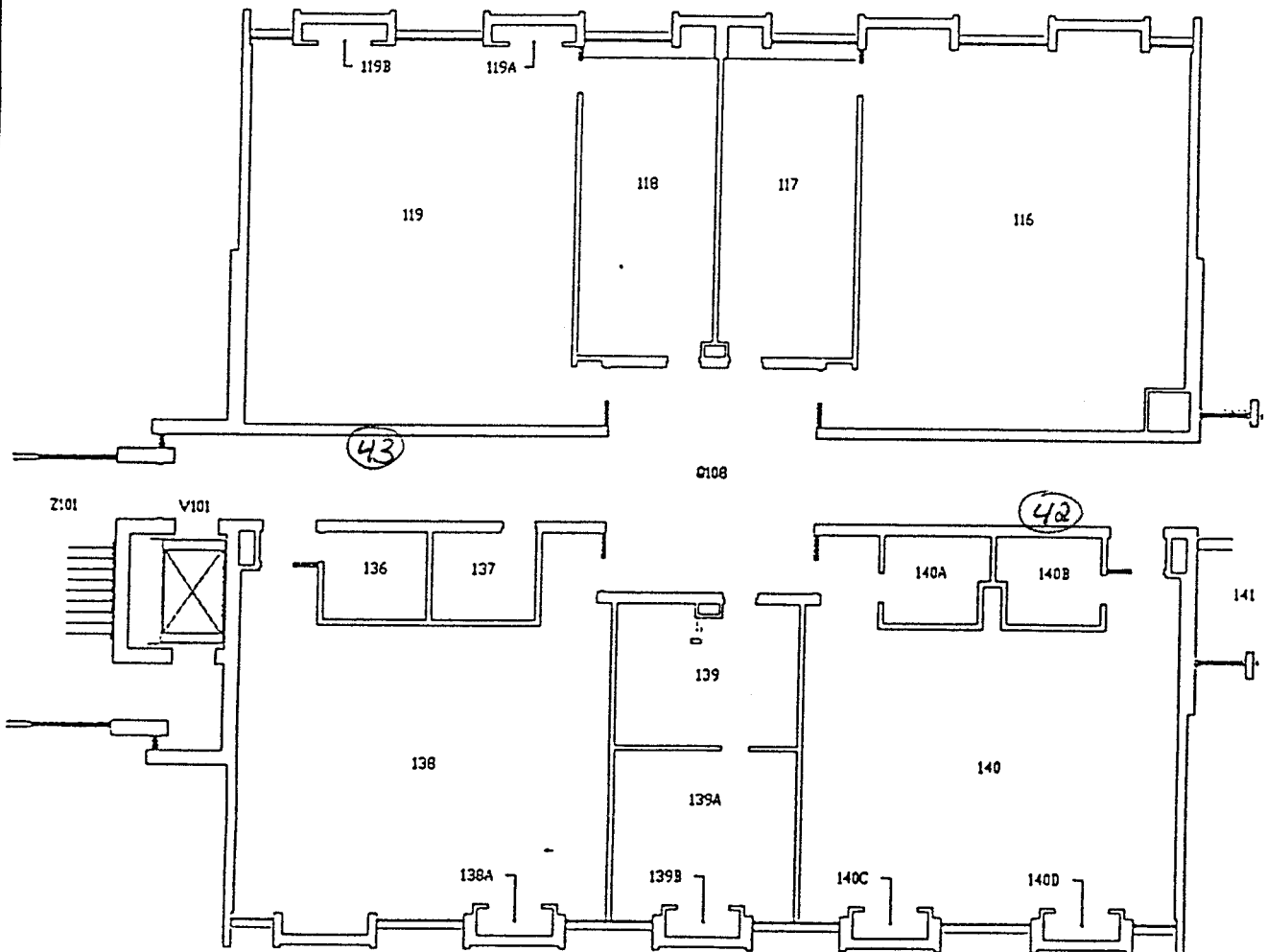


0981-044
HOY HOUSE
FIRST FLOOR PLAN

THE PENNSYLVANIA STATE UNIVERSITY
OFFICE OF THE PHYSICAL PLANT
NEW KENSINGTON CAMPUS



SCI
UPPER FLOOR



0981-001
SCIENCE BUILDING
FIRST FLOOR PLAN

THE PENNSYLVANIA STATE UNIVERSITY
OFFICE OF THE PHYSICAL PLANT
NEW KENSINGTON CAMPUS

SCALE: 1/8" = 1'-0"
1" = 12'-0"